



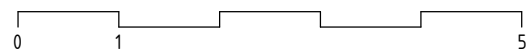
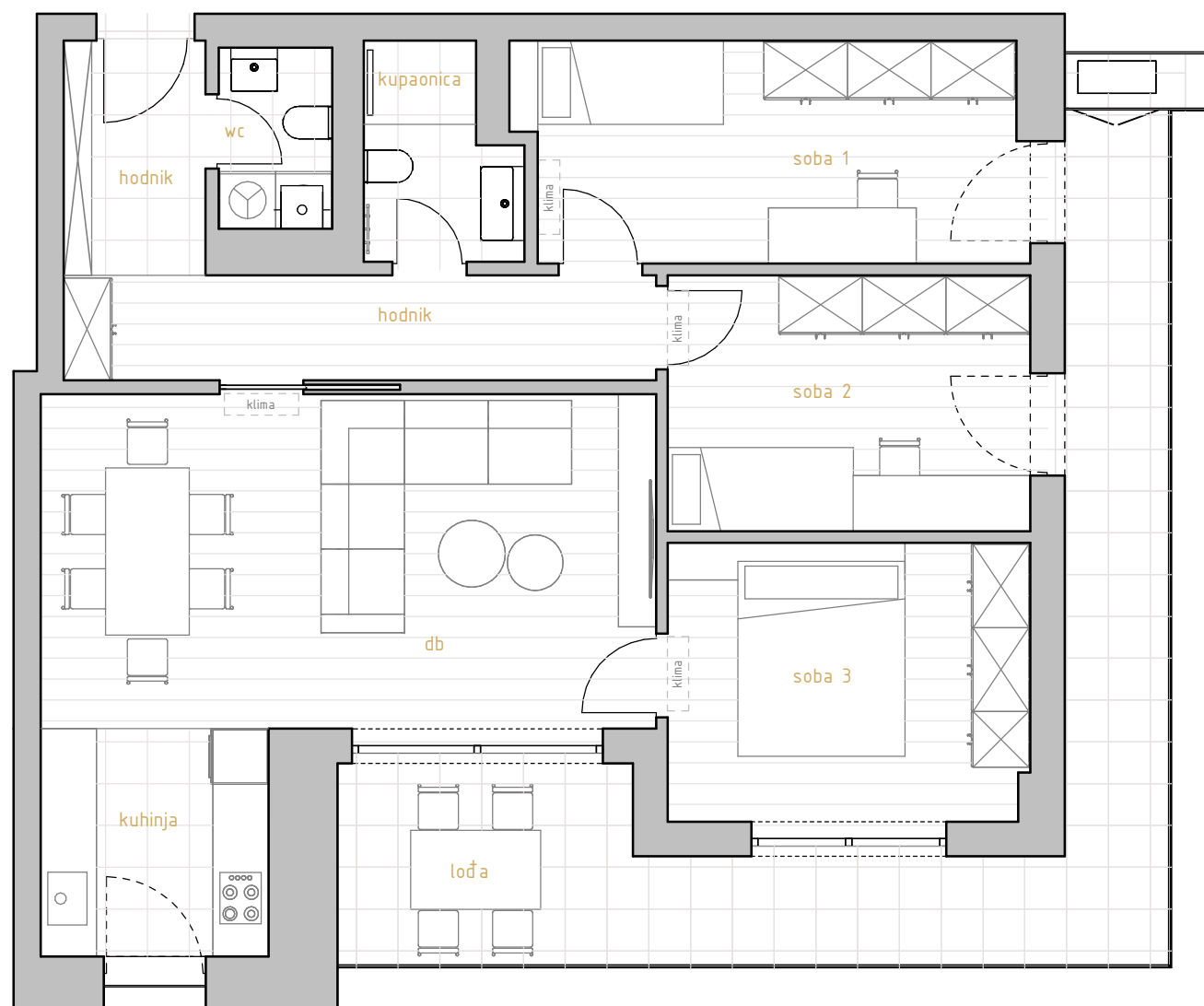
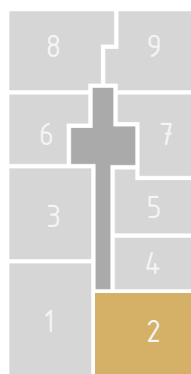
# PREMIUM LIVING

RIJEKA

stan 2.1



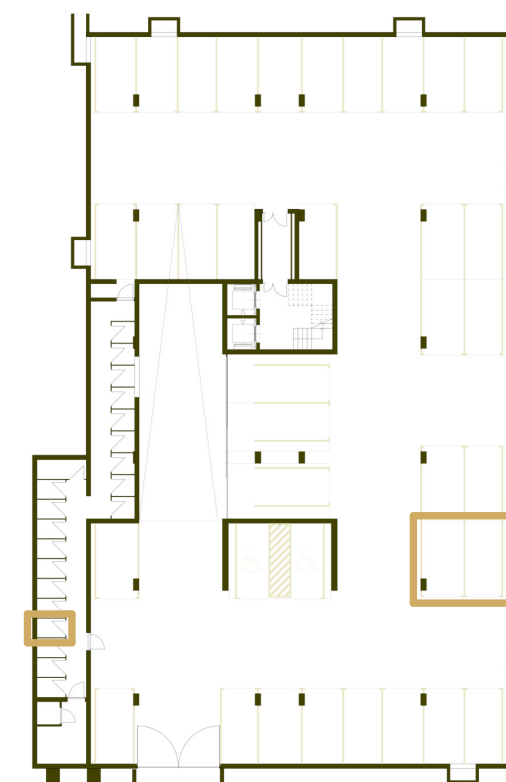
prostorija	korisna površina	koef.	obračunska površina
db	23,88 m <sup>2</sup>	1	23,88 m <sup>2</sup>
hodnik	7,21 m <sup>2</sup>	1	7,21 m <sup>2</sup>
hodnik	3,85 m <sup>2</sup>	1	3,85 m <sup>2</sup>
kuhinja	6,03 m <sup>2</sup>	1	6,03 m <sup>2</sup>
kupaonica	3,91 m <sup>2</sup>	1	3,91 m <sup>2</sup>
soba 1	12,87 m <sup>2</sup>	1	12,87 m <sup>2</sup>
soba 2	10,76 m <sup>2</sup>	1	10,76 m <sup>2</sup>
soba 3	11,67 m <sup>2</sup>	1	11,67 m <sup>2</sup>
wc	2,51 m <sup>2</sup>	1	2,51 m <sup>2</sup>
	82,69 m <sup>2</sup>		82,69 m <sup>2</sup>
lođa	23,96 m <sup>2</sup>	0,75	17,97 m <sup>2</sup>
	23,96 m <sup>2</sup>		17,97 m <sup>2</sup>
SP37	2,37 m <sup>2</sup>	0,5	1,19 m <sup>2</sup>
	2,37 m <sup>2</sup>		1,19 m <sup>2</sup>
GM67	14,00 m <sup>2</sup>	0,5	7,00 m <sup>2</sup>
GM66	14,18 m <sup>2</sup>	0,5	7,09 m <sup>2</sup>
	28,18 m <sup>2</sup>		14,09 m <sup>2</sup>
stan 2.1	137,20 m <sup>2</sup>		115,94 m <sup>2</sup>



\* visine spavaćih soba i dnevnih prostora su 270cm,  
 dok pomoćne prostorije (kupaonice, ostave, garderobe) imaju visinu od 250cm  
 \* katalog stanova je informativnog karaktera i moguća su eventualna odstupanja



istočno pročelje



garaža -2

# 1.kat 3s+db

stan 2.1