



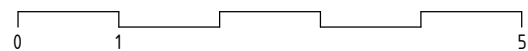
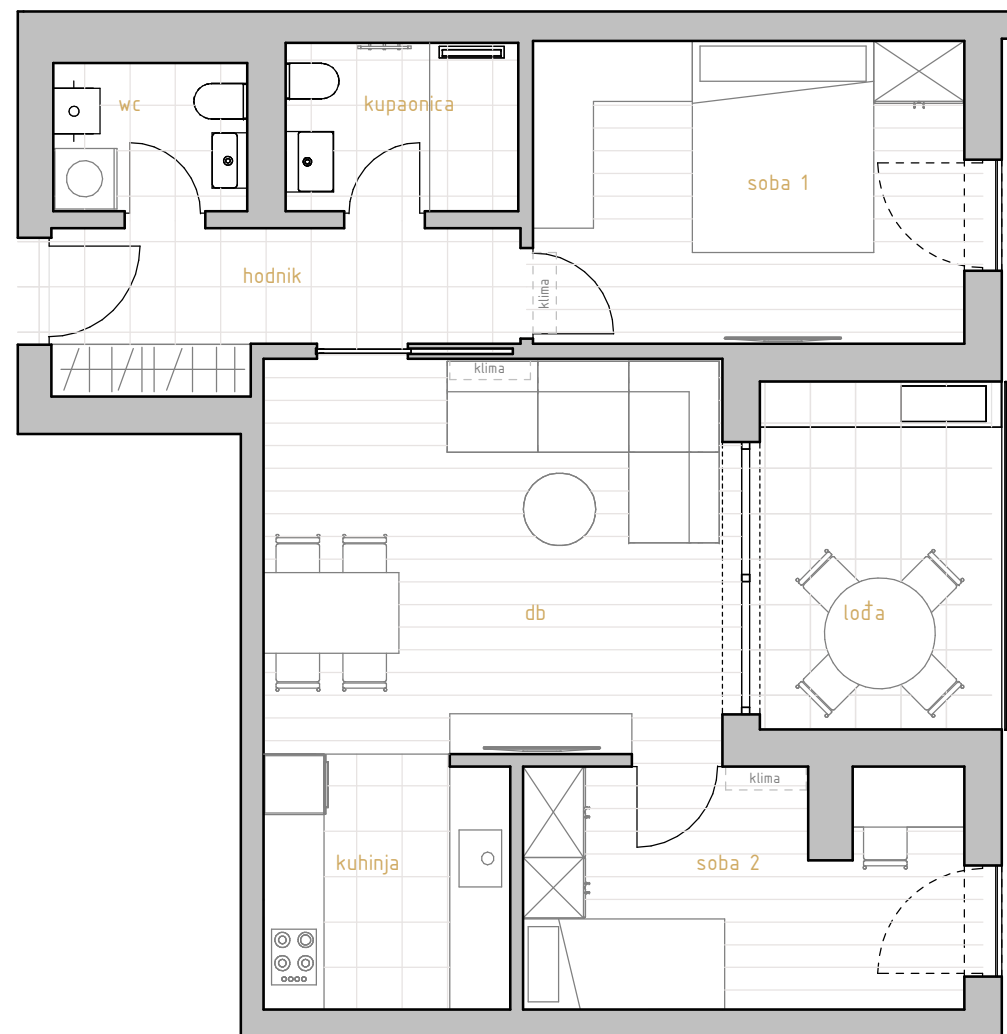
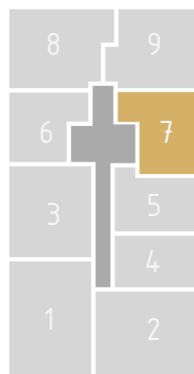
# PREMIUM LIVING

RIJEKA

stan 7.1



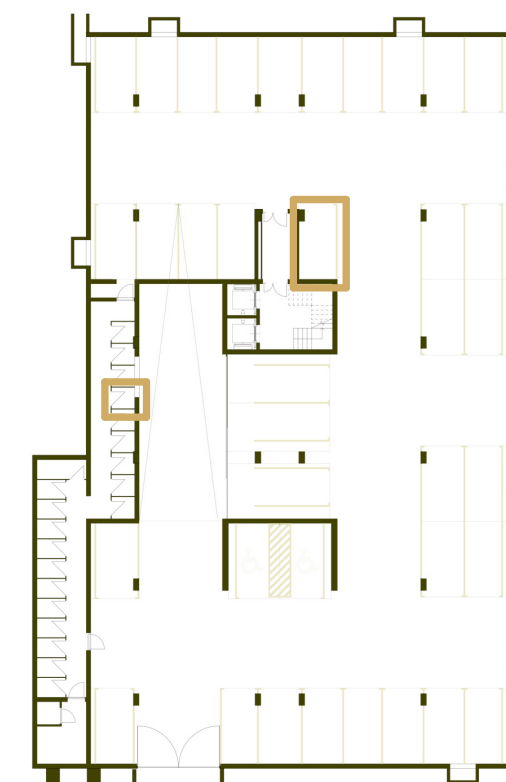
prostorija	korisna površina	koef.	obračunska površina
db	17,86 m <sup>2</sup>	1	17,86 m <sup>2</sup>
hodnik	6,37 m <sup>2</sup>	1	6,37 m <sup>2</sup>
kuhinja	6,14 m <sup>2</sup>	1	6,14 m <sup>2</sup>
kupaonica	4,02 m <sup>2</sup>	1	4,02 m <sup>2</sup>
soba 1	12,86 m <sup>2</sup>	1	12,86 m <sup>2</sup>
soba 2	10,15 m <sup>2</sup>	1	10,15 m <sup>2</sup>
wc	2,97 m <sup>2</sup>	1	2,97 m <sup>2</sup>
	60,37 m <sup>2</sup>		60,37 m <sup>2</sup>
lođa	8,28 m <sup>2</sup>	0,75	6,21 m <sup>2</sup>
	8,28 m <sup>2</sup>		6,21 m <sup>2</sup>
SP23	2,14 m <sup>2</sup>	0,5	1,07 m <sup>2</sup>
	2,14 m <sup>2</sup>		1,07 m <sup>2</sup>
GM53	12,58 m <sup>2</sup>	0,5	6,29 m <sup>2</sup>
	12,58 m <sup>2</sup>		6,29 m <sup>2</sup>
stan 7.1	83,37 m <sup>2</sup>		73,94 m <sup>2</sup>



\* visine spavaćih soba i dnevnih prostora su 270cm,  
 dok pomoćne prostorije (kupaonice, ostave, garderobe) imaju visinu od 250cm  
 \* katalog stanova je informativnog karaktera i moguća su eventualna odstupanja



istočno pročelje



garaža -2

# 1.kat 2s+db

stan 7.1