



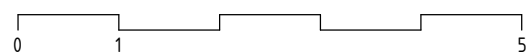
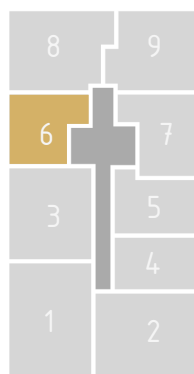
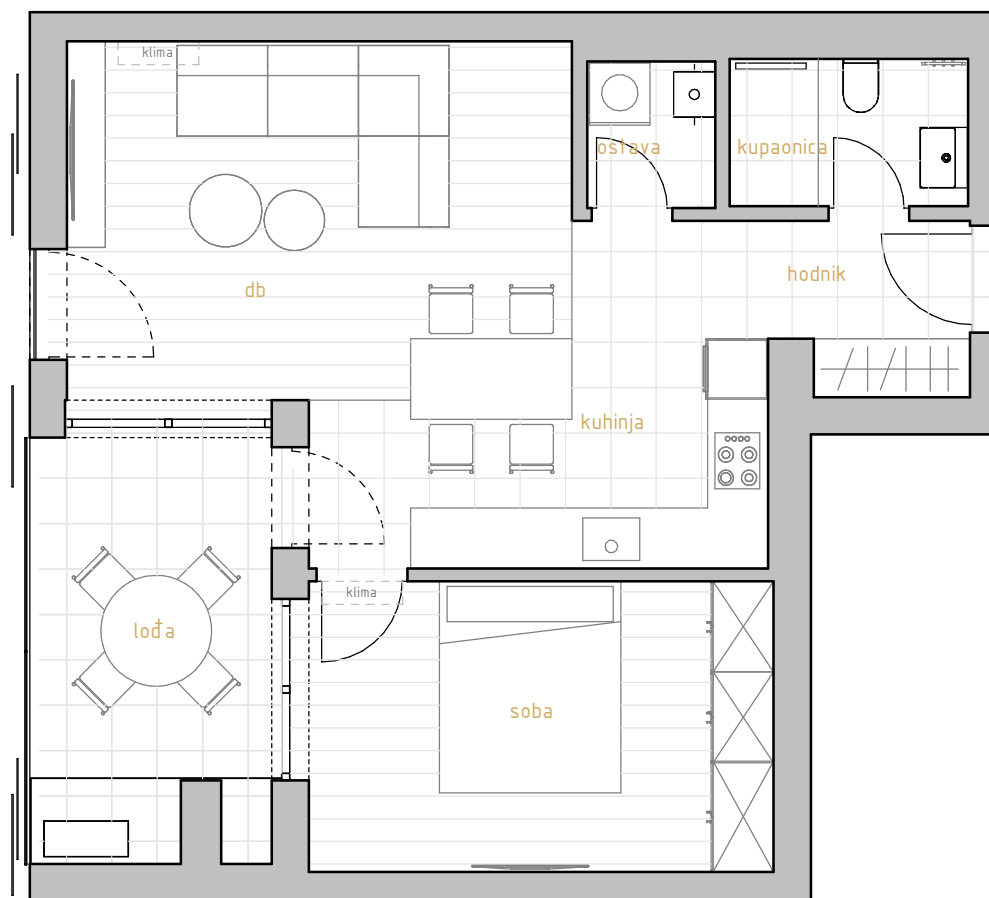
# PREMIUM LIVING

RIJEKA

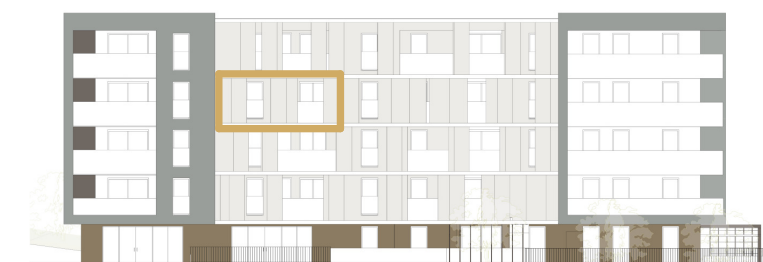
stan 6.3



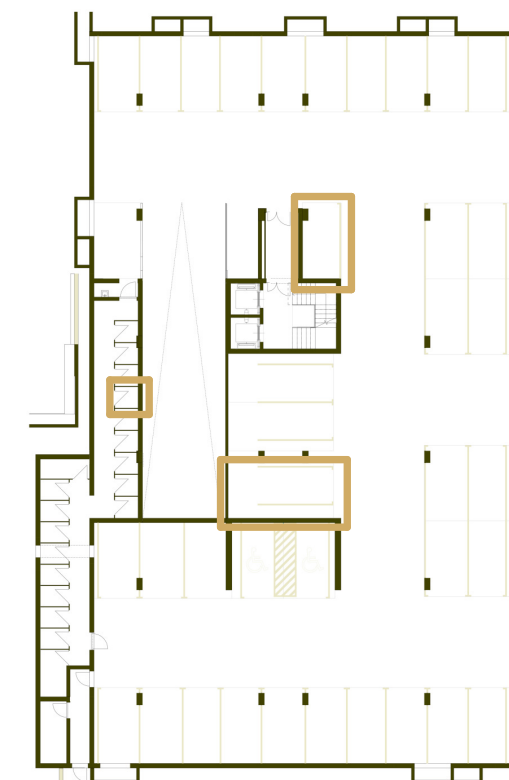
prostorija	korisna površina	koef.	obračunska površina
db	17,84 m <sup>2</sup>	1	17,84 m <sup>2</sup>
hodnik	3,24 m <sup>2</sup>	1	3,24 m <sup>2</sup>
kuhinja	11,07 m <sup>2</sup>	1	11,07 m <sup>2</sup>
kupaonica	3,61 m <sup>2</sup>	1	3,61 m <sup>2</sup>
ostava	1,85 m <sup>2</sup>	1	1,85 m <sup>2</sup>
soba	13,30 m <sup>2</sup>	1	13,30 m <sup>2</sup>
	50,91 m <sup>2</sup>		50,91 m <sup>2</sup>
lođa	9,81 m <sup>2</sup>	0,75	7,36 m <sup>2</sup>
	9,81 m <sup>2</sup>		7,36 m <sup>2</sup>
SP4	2,14 m <sup>2</sup>	0,5	1,07 m <sup>2</sup>
	2,14 m <sup>2</sup>		1,07 m <sup>2</sup>
GM19	25,35 m <sup>2</sup>	0,5	12,68 m <sup>2</sup>
	25,35 m <sup>2</sup>		12,68 m <sup>2</sup>
stan 6.3	88,21 m <sup>2</sup>		72,02 m <sup>2</sup>



\* visine spavaćih soba i dnevnih prostora su 270cm,  
 dok pomoćne prostorije (kupaonice, ostave, garderobe) imaju visinu od 250cm  
 \* katalog stanova je informativnog karaktera i moguća su eventualna odstupanja



zapadno pročelje



garaža -1

# 3.kat 1s+db

stan 6.3