



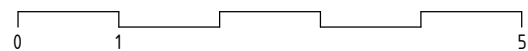
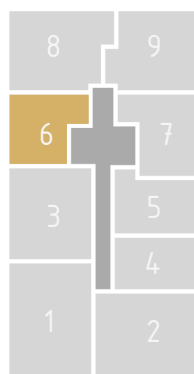
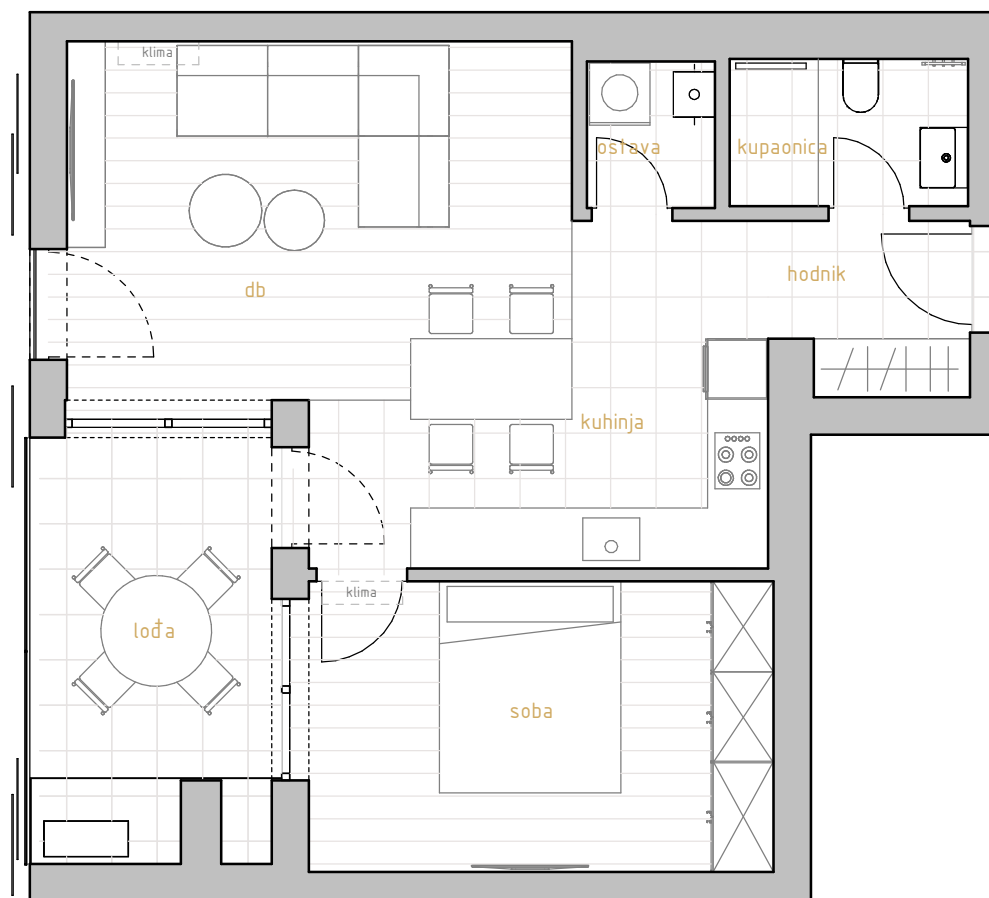
# PREMIUM LIVING

RIJEKA

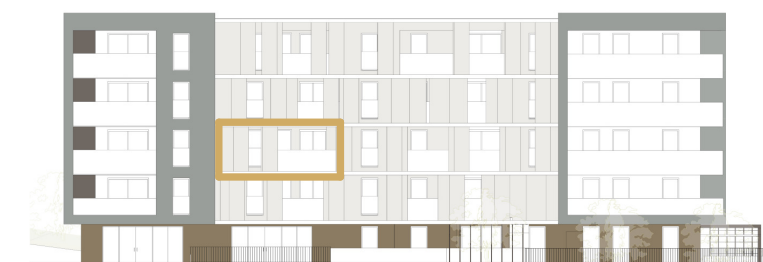
stan 6.2



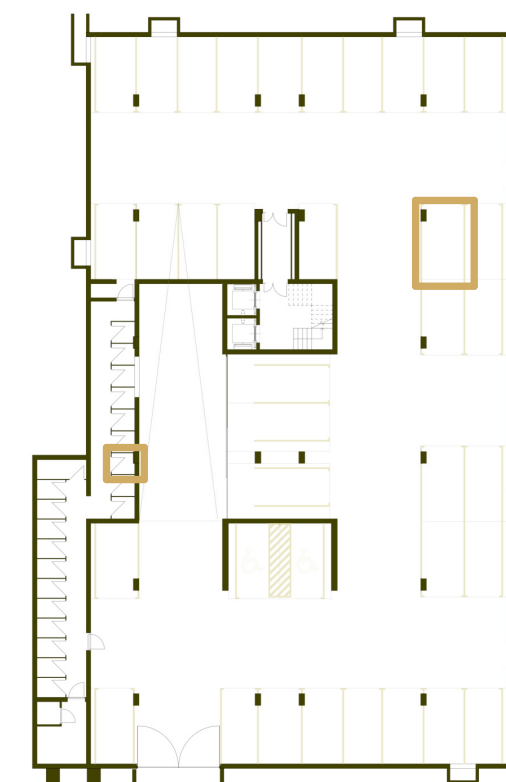
prostorija	korisna površina	koef.	obračunska površina
db	17,84 m <sup>2</sup>	1	17,84 m <sup>2</sup>
hodnik	3,24 m <sup>2</sup>	1	3,24 m <sup>2</sup>
kuhinja	11,07 m <sup>2</sup>	1	11,07 m <sup>2</sup>
kupaonica	3,61 m <sup>2</sup>	1	3,61 m <sup>2</sup>
ostava	1,85 m <sup>2</sup>	1	1,85 m <sup>2</sup>
soba	13,30 m <sup>2</sup>	1	13,30 m <sup>2</sup>
	50,91 m <sup>2</sup>		50,91 m <sup>2</sup>
lođa	9,81 m <sup>2</sup>	0,75	7,36 m <sup>2</sup>
	9,81 m <sup>2</sup>		7,36 m <sup>2</sup>
SP26	2,07 m <sup>2</sup>	0,5	1,04 m <sup>2</sup>
	2,07 m <sup>2</sup>		1,04 m <sup>2</sup>
GMS4	14,18 m <sup>2</sup>	0,5	7,09 m <sup>2</sup>
	14,18 m <sup>2</sup>		7,09 m <sup>2</sup>
stan 6.2	76,97 m <sup>2</sup>		66,39 m <sup>2</sup>



\* visine spavaćih soba i dnevnih prostora su 270cm,  
 dok pomoćne prostorije (kupaonice, ostave, garderobe) imaju visinu od 250cm  
 \* katalog stanova je informativnog karaktera i moguća su eventualna odstupanja



zapadno pročelje



garaža -2

# 2.kat 1s+db

stan 6.2