



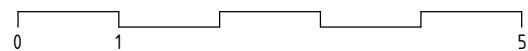
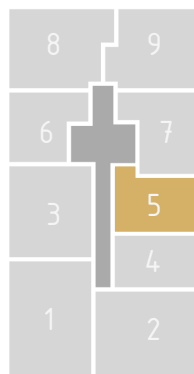
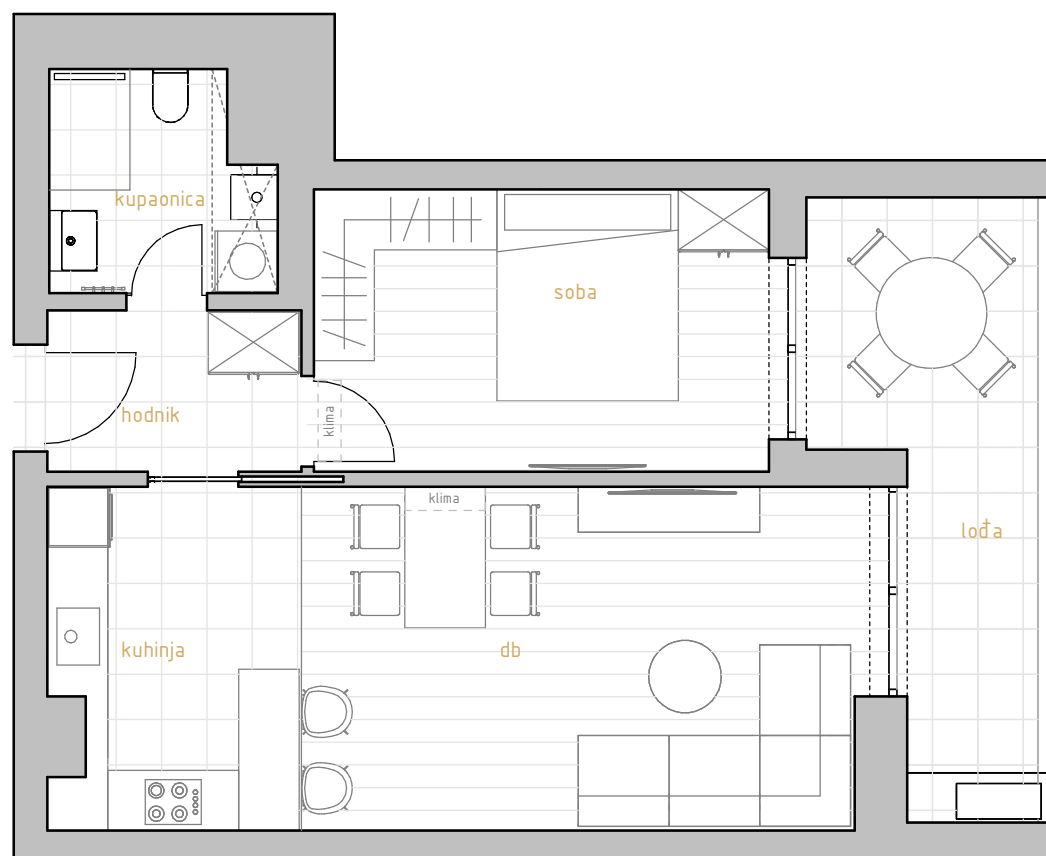
# PREMIUM LIVING

RIJEKA

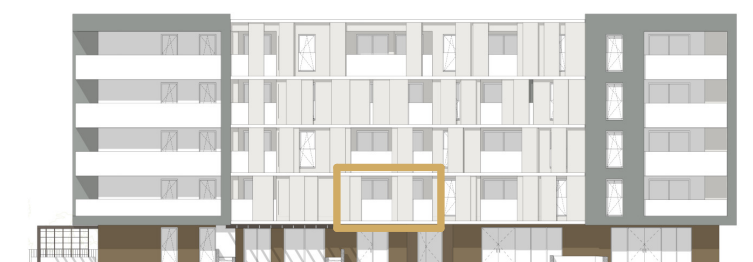
stan 5.1



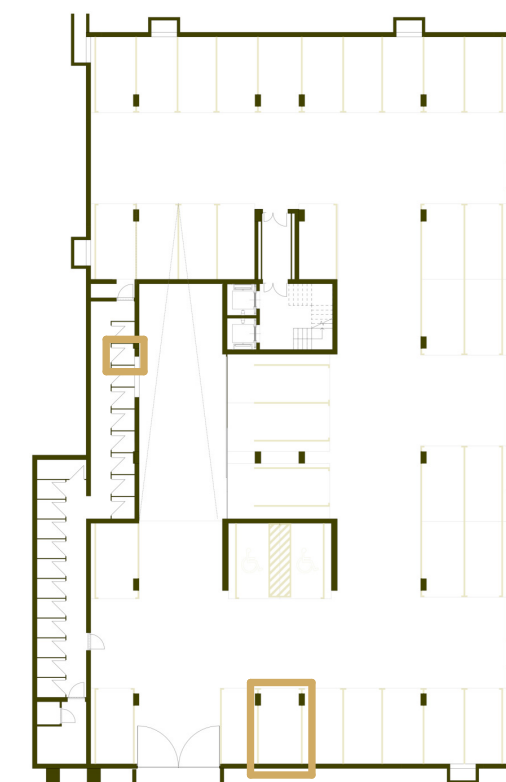
prostorija	korisna površina	koef.	obračunska površina
db	19,03 m <sup>2</sup>	1	19,03 m <sup>2</sup>
hodnik	4,03 m <sup>2</sup>	1	4,03 m <sup>2</sup>
kuhinja	8,29 m <sup>2</sup>	1	8,29 m <sup>2</sup>
kupaonica	4,75 m <sup>2</sup>	1	4,75 m <sup>2</sup>
soba	12,64 m <sup>2</sup>	1	12,64 m <sup>2</sup>
<b>lođa</b>	11,18 m <sup>2</sup>	0,75	8,39 m <sup>2</sup>
<b>SP21</b>	2,11 m <sup>2</sup>	0,5	1,06 m <sup>2</sup>
<b>GM70</b>	14,18 m <sup>2</sup>	0,5	7,09 m <sup>2</sup>
<b>stan 5.1</b>	<b>76,21 m<sup>2</sup></b>		<b>65,27 m<sup>2</sup></b>



\* visine spavaćih soba i dnevnih prostora su 270cm,  
 dok pomoćne prostorije (kupaonice, ostave, garderobe) imaju visinu od 250cm  
 \* katalog stanova je informativnog karaktera i moguća su eventualna odstupanja



istočno pročelje



garaža -2

# 1.kat 1s+db

stan 5.1