



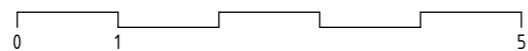
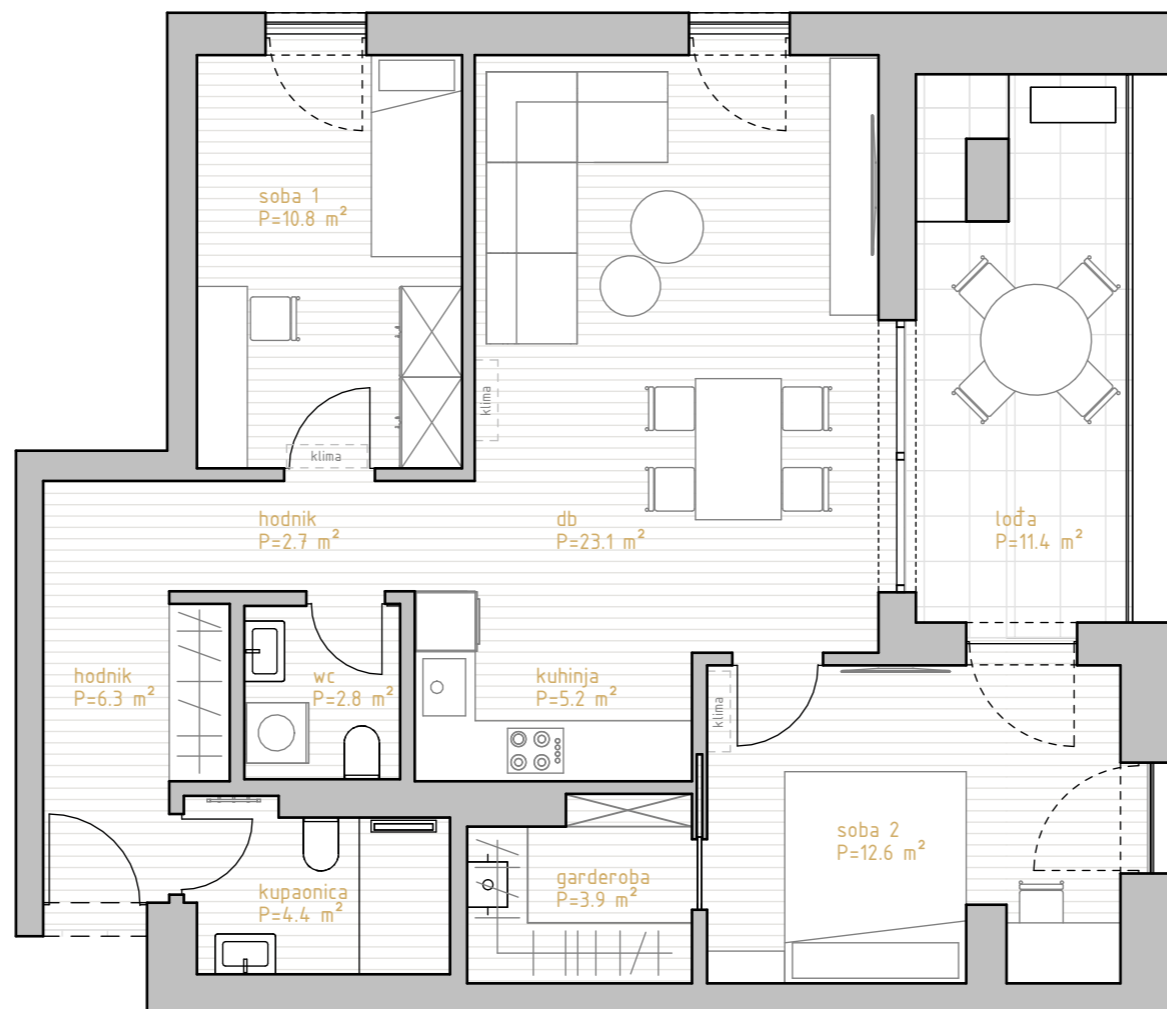
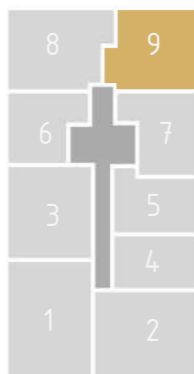
# PREMIUM LIVING

RIJEKA

stan 9.1



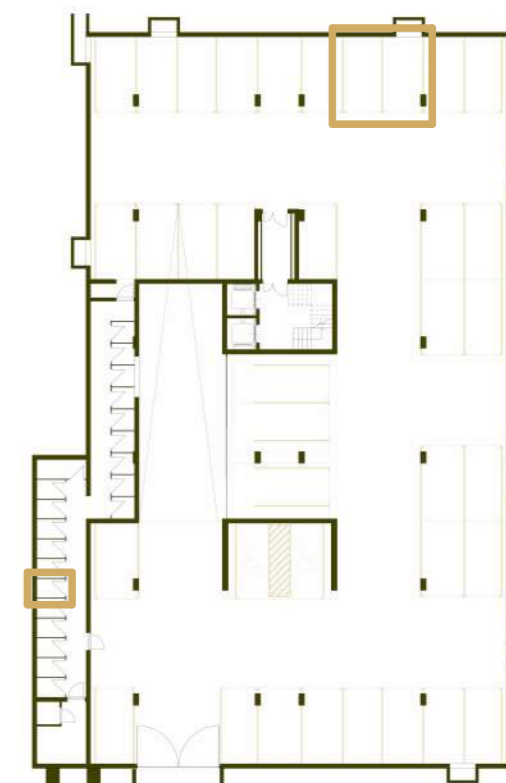
prostorija	korisna površina	koef	obračunska površina
hodnik	6.29 m <sup>2</sup>	1.00	6.29 m <sup>2</sup>
hodnik	2.67 m <sup>2</sup>	1.00	2.67 m <sup>2</sup>
kupaonica	4.39 m <sup>2</sup>	1.00	4.39 m <sup>2</sup>
wc	2.79 m <sup>2</sup>	1.00	2.79 m <sup>2</sup>
soba 1	10.78 m <sup>2</sup>	1.00	10.78 m <sup>2</sup>
db	23.09 m <sup>2</sup>	1.00	23.09 m <sup>2</sup>
kuhinja	5.18 m <sup>2</sup>	1.00	5.18 m <sup>2</sup>
soba 2	12.63 m <sup>2</sup>	1.00	12.63 m <sup>2</sup>
garderoba	3.87 m <sup>2</sup>	1.00	3.87 m <sup>2</sup>
	71.70 m <sup>2</sup>		71.70 m <sup>2</sup>
lođa	11.37 m <sup>2</sup>	0.75	8.53 m <sup>2</sup>
	11.37 m <sup>2</sup>		8.53 m <sup>2</sup>
SP35	2.37 m <sup>2</sup>	0.50	1.18 m <sup>2</sup>
	2.37 m <sup>2</sup>		1.18 m <sup>2</sup>
GM45	12.88 m <sup>2</sup>	0.50	6.44 m <sup>2</sup>
GM46	13.53 m <sup>2</sup>	0.50	6.76 m <sup>2</sup>
	26.40 m <sup>2</sup>		13.20 m <sup>2</sup>
	111.84 m <sup>2</sup>		94.61 m <sup>2</sup>



\* visine spavaćih soba i dnevnih prostora su 270cm,  
 dok pomoćne prostorije (kupaonice, ostave, garderobe) imaju visinu od 250cm  
 \*\* katalog stanova je informativnog karaktera i moguća su eventualna odstupanja



istočno pročelje



garaža -2

# 1.kat 2s+db

stan 9.1