



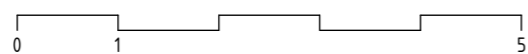
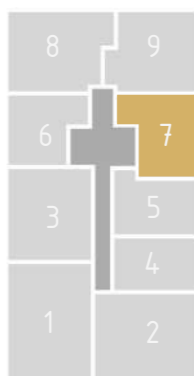
# PREMIUM LIVING

RIJEKA

stan 7.2



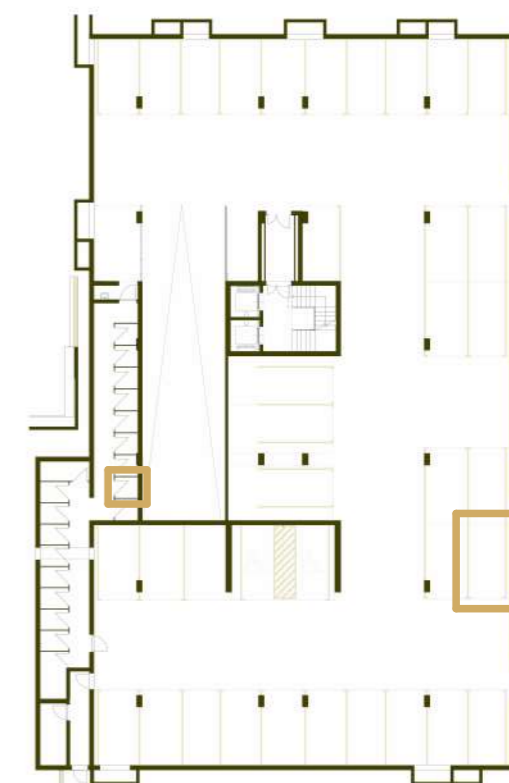
prostorija	korisna površina	koef	obračunska površina
hodnik	6.37 m <sup>2</sup>	1.00	6.37 m <sup>2</sup>
wc	2.97 m <sup>2</sup>	1.00	2.97 m <sup>2</sup>
kupaonica	4.02 m <sup>2</sup>	1.00	4.02 m <sup>2</sup>
soba 1	12.86 m <sup>2</sup>	1.00	12.86 m <sup>2</sup>
db	17.86 m <sup>2</sup>	1.00	17.86 m <sup>2</sup>
kuhinja	6.14 m <sup>2</sup>	1.00	6.14 m <sup>2</sup>
soba 2	10.15 m <sup>2</sup>	1.00	10.15 m <sup>2</sup>
	60.35 m <sup>2</sup>		60.35 m <sup>2</sup>
lođa	8.28 m <sup>2</sup>	0.75	6.21 m <sup>2</sup>
	8.28 m <sup>2</sup>		6.21 m <sup>2</sup>
SP27	2.14 m <sup>2</sup>	0.50	1.07 m <sup>2</sup>
	2.14 m <sup>2</sup>		1.07 m <sup>2</sup>
GM67	14.00 m <sup>2</sup>	0.50	7.00 m <sup>2</sup>
	14.00 m <sup>2</sup>		7.00 m <sup>2</sup>
	84.77 m <sup>2</sup>		74.63 m <sup>2</sup>



\* visine spavaćih soba i dnevnih prostora su 270cm,  
 dok pomoćne prostorije (kupaonice, ostave, garderobe) imaju visinu od 250cm  
 \*\* katalog stanova je informativnog karaktera i moguća su eventualna odstupanja



istočno pročelje



garaža -1

# 2.kat 2s+db

stan 7.2