



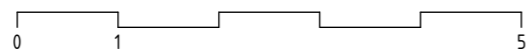
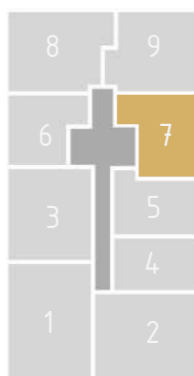
PREMIUM LIVING

RIJEKA

stan 7.1



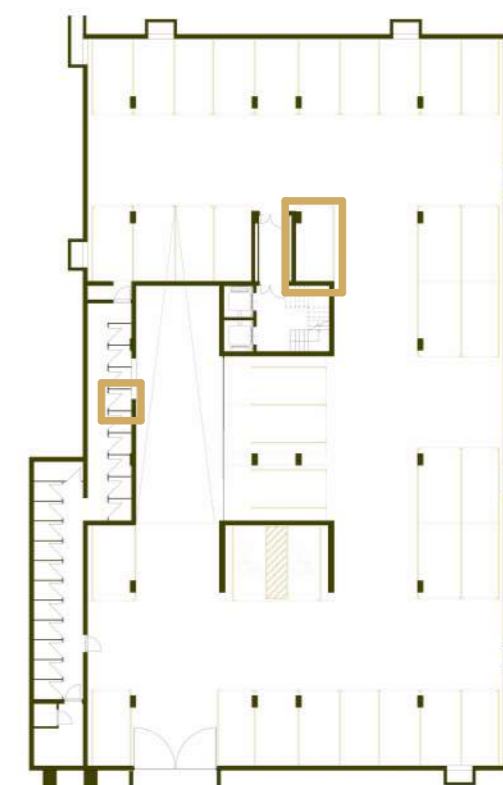
| prostorija | korisna površina | koef | obračunska površina |
|------------|----------------------|------|----------------------|
| hodnik | 6.37 m ² | 1.00 | 6.37 m ² |
| wc | 2.97 m ² | 1.00 | 2.97 m ² |
| kupaonica | 4.02 m ² | 1.00 | 4.02 m ² |
| soba 1 | 12.86 m ² | 1.00 | 12.86 m ² |
| db | 17.86 m ² | 1.00 | 17.86 m ² |
| kuhinja | 6.14 m ² | 1.00 | 6.14 m ² |
| soba 2 | 10.15 m ² | 1.00 | 10.15 m ² |
| | 60.35 m ² | | 60.35 m ² |
| lođa | 8.28 m ² | 0.75 | 6.21 m ² |
| | 8.28 m ² | | 6.21 m ² |
| SP23 | 2.14 m ² | 0.50 | 1.07 m ² |
| | 2.14 m ² | | 1.07 m ² |
| GM53 | 12.58 m ² | 0.50 | 6.29 m ² |
| | 12.58 m ² | | 6.29 m ² |
| | 83.35 m ² | | 73.92 m ² |



* visine spavaćih soba i dnevnih prostora su 270cm,
dok pomoćne prostorije (kupaonice, ostave, garderobe) imaju visinu od 250cm
** katalog stanova je informativnog karaktera i moguća su eventualna odstupanja



istočno pročelje



garaža -2

1.kat 2s+db

stan 7.1