



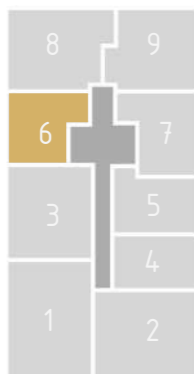
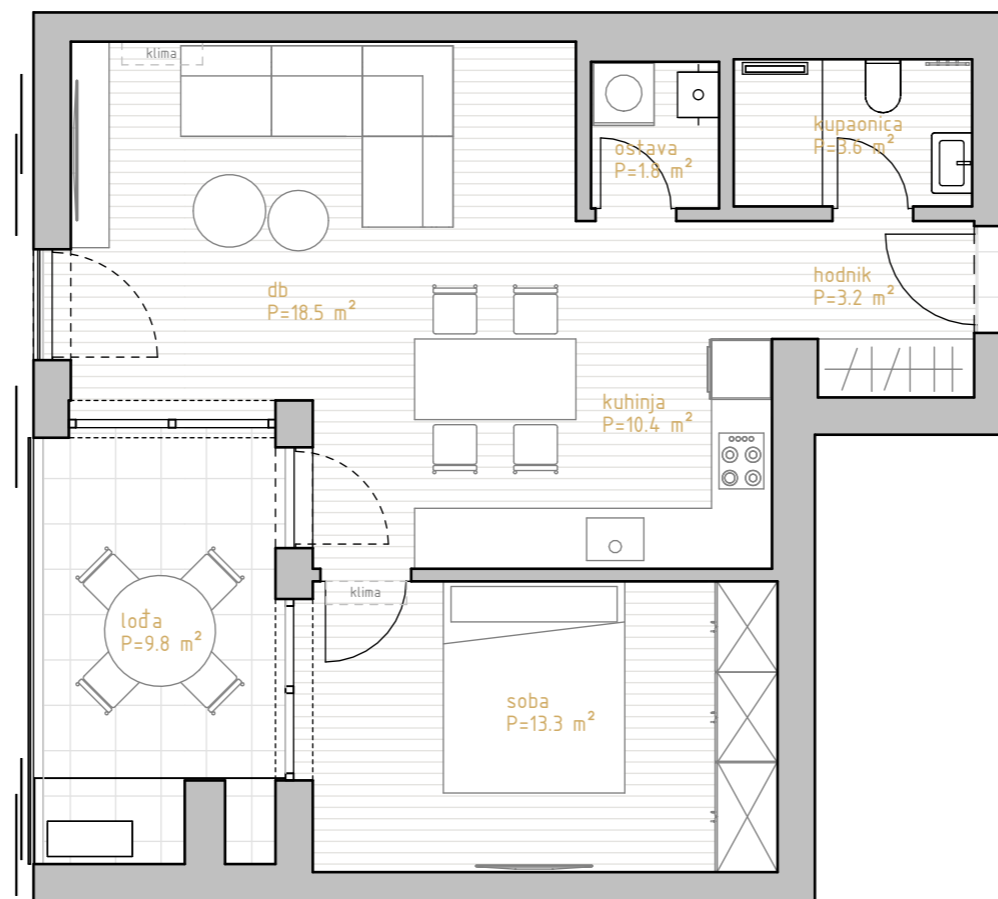
# PREMIUM LIVING

RIJEKA

stan 6.2



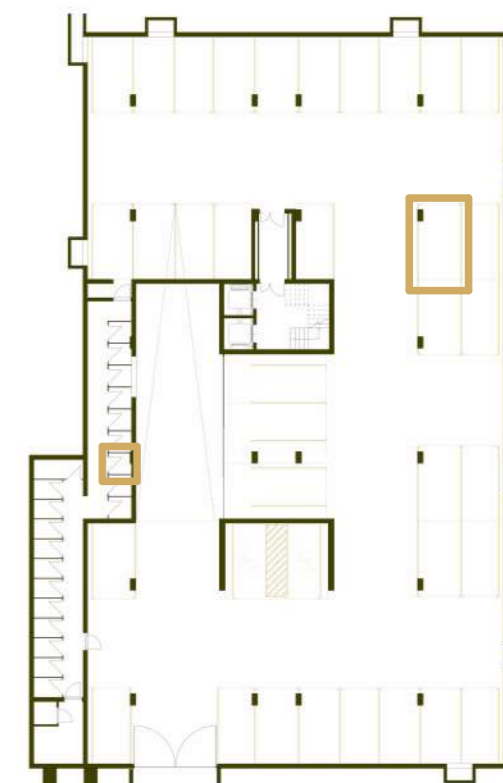
prostorija	korisna površina	koef	obračunska površina
hodnik	3.24 m <sup>2</sup>	1.00	3.24 m <sup>2</sup>
kupaonica	3.61 m <sup>2</sup>	1.00	3.61 m <sup>2</sup>
ostava	1.85 m <sup>2</sup>	1.00	1.85 m <sup>2</sup>
kuhinja	10.36 m <sup>2</sup>	1.00	10.36 m <sup>2</sup>
db	18.55 m <sup>2</sup>	1.00	18.55 m <sup>2</sup>
soba	13.30 m <sup>2</sup>	1.00	13.30 m <sup>2</sup>
	50.91 m <sup>2</sup>		50.91 m <sup>2</sup>
lođa	9.81 m <sup>2</sup>	0.75	7.36 m <sup>2</sup>
	9.81 m <sup>2</sup>		7.36 m <sup>2</sup>
SP26	2.07 m <sup>2</sup>	0.50	1.03 m <sup>2</sup>
	2.07 m <sup>2</sup>		1.03 m <sup>2</sup>
GM54	14.18 m <sup>2</sup>	0.50	7.09 m <sup>2</sup>
	14.18 m <sup>2</sup>		7.09 m <sup>2</sup>
	76.96 m <sup>2</sup>		66.39 m <sup>2</sup>



\* visine spavaćih soba i dnevnih prostora su 270cm,  
 dok pomoćne prostorije (kupaonice, ostave, garderobe) imaju visinu od 250cm  
 \*\* katalog stanova je informativnog karaktera i moguća su eventualna odstupanja



zapadno pročelje



garaža -2

# 2.kat 1s+db