



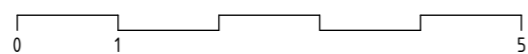
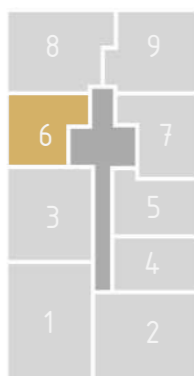
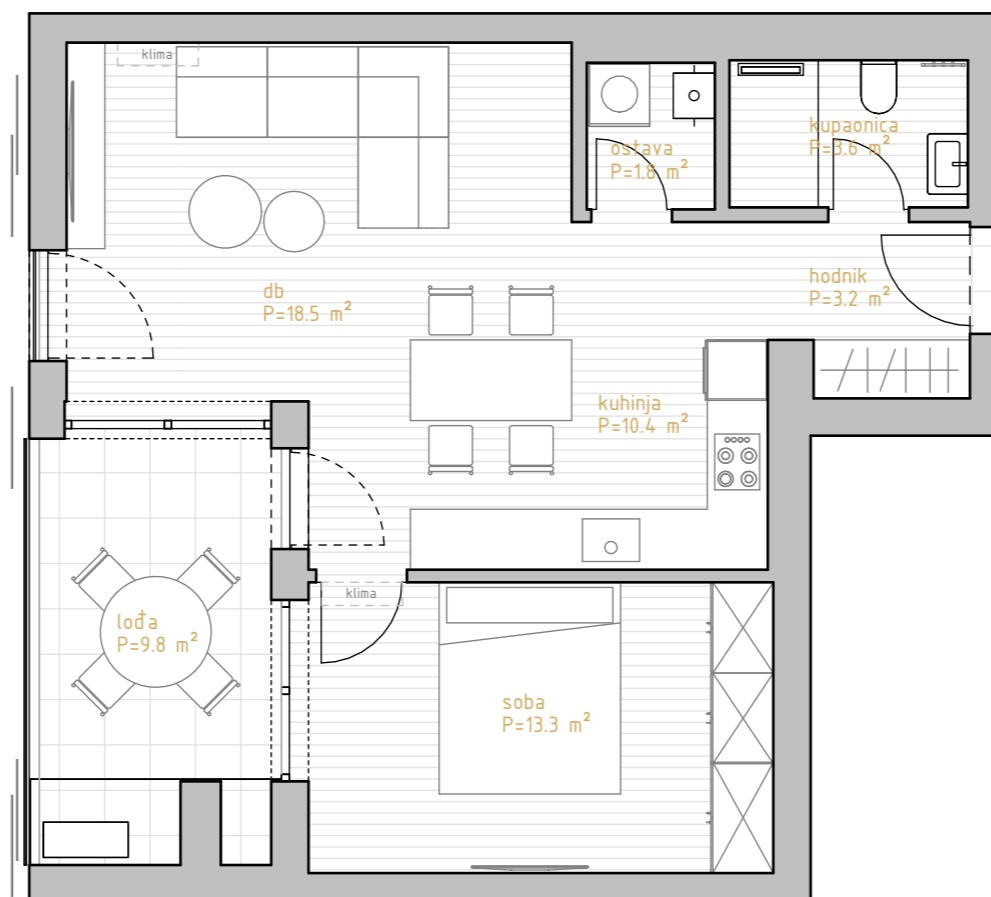
# PREMIUM LIVING

RIJEKA

stan 6.1



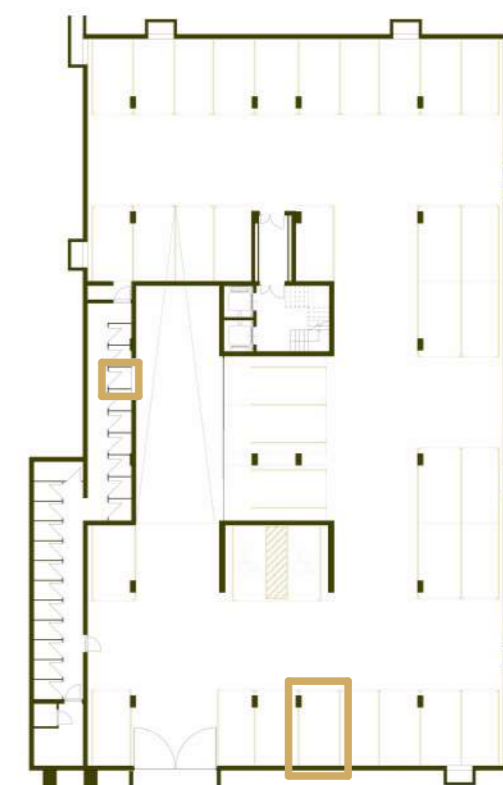
prostorija	korisna površina	koef	obračunska površina
hodnik	3.24 m <sup>2</sup>	1.00	3.24 m <sup>2</sup>
kupaonica	3.61 m <sup>2</sup>	1.00	3.61 m <sup>2</sup>
ostava	1.85 m <sup>2</sup>	1.00	1.85 m <sup>2</sup>
kuhinja	10.36 m <sup>2</sup>	1.00	10.36 m <sup>2</sup>
db	18.55 m <sup>2</sup>	1.00	18.55 m <sup>2</sup>
soba	13.30 m <sup>2</sup>	1.00	13.30 m <sup>2</sup>
	50.90 m <sup>2</sup>		50.90 m <sup>2</sup>
lođa	9.81 m <sup>2</sup>	0.75	7.36 m <sup>2</sup>
	9.81 m <sup>2</sup>		7.36 m <sup>2</sup>
SP22	2.14 m <sup>2</sup>	0.50	1.07 m <sup>2</sup>
	2.14 m <sup>2</sup>		1.07 m <sup>2</sup>
GM71	13.53 m <sup>2</sup>	0.50	6.76 m <sup>2</sup>
	13.53 m <sup>2</sup>		6.76 m <sup>2</sup>
	76.38 m <sup>2</sup>		66.09 m <sup>2</sup>



\* visine spavaćih soba i dnevnih prostora su 270cm,  
 dok pomoćne prostorije (kupaonice, ostave, garderobe) imaju visinu od 250cm  
 \*\* katalog stanova je informativnog karaktera i moguća su eventualna odstupanja



zapadno pročelje



garaža -2

# 1.kat 1s+db