



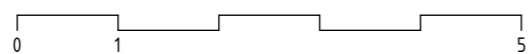
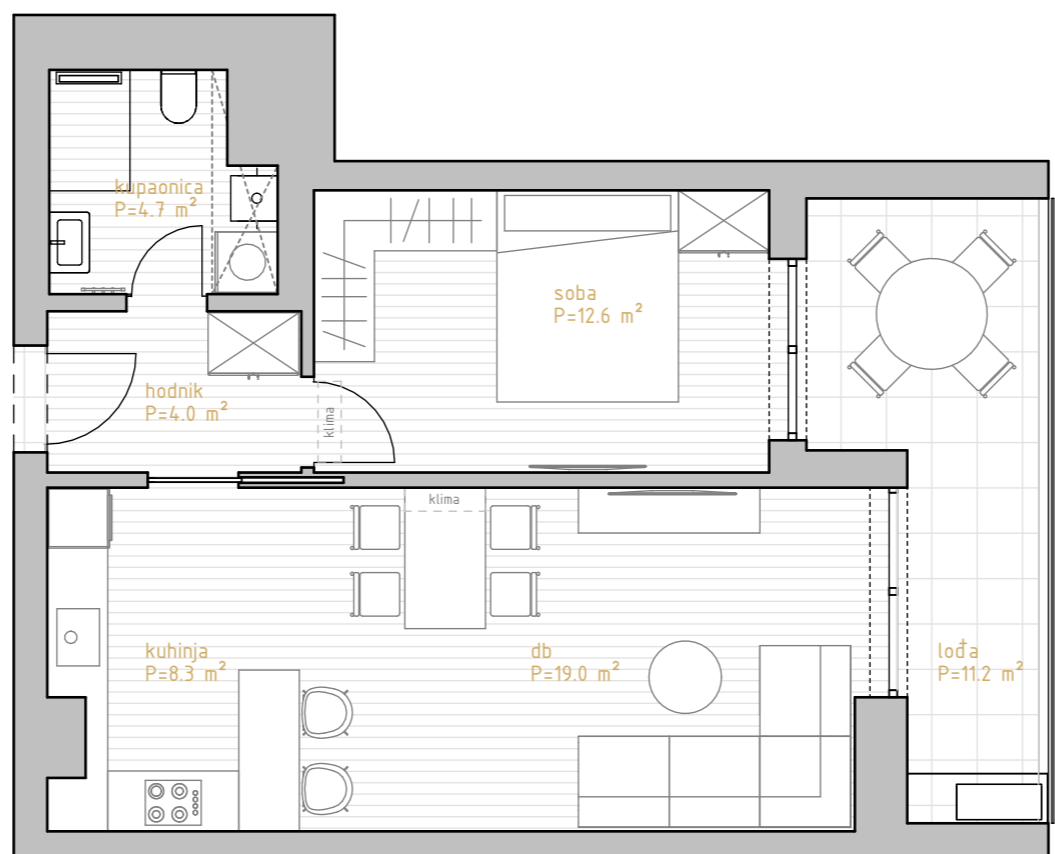
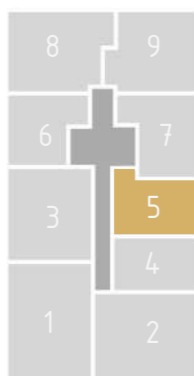
# PREMIUM LIVING

RIJEKA

stan 5.4



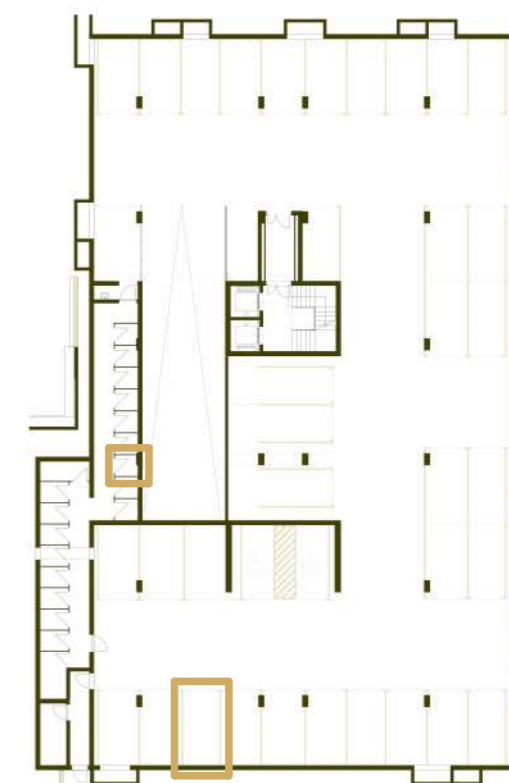
prostorija	korisna površina	koef	obračunska površina
hodnik	4.03 m <sup>2</sup>	1.00	4.03 m <sup>2</sup>
kupaonica	4.75 m <sup>2</sup>	1.00	4.75 m <sup>2</sup>
kuhinja	8.29 m <sup>2</sup>	1.00	8.29 m <sup>2</sup>
db	19.03 m <sup>2</sup>	1.00	19.03 m <sup>2</sup>
soba	12.64 m <sup>2</sup>	1.00	12.64 m <sup>2</sup>
	48.74 m <sup>2</sup>		48.74 m <sup>2</sup>
lođa	11.18 m <sup>2</sup>	0.75	8.39 m <sup>2</sup>
	11.18 m <sup>2</sup>		8.39 m <sup>2</sup>
SP7	2.07 m <sup>2</sup>	0.50	1.04 m <sup>2</sup>
	2.07 m <sup>2</sup>		1.04 m <sup>2</sup>
GM31	12.50 m <sup>2</sup>	0.50	6.25 m <sup>2</sup>
	12.50 m <sup>2</sup>		6.25 m <sup>2</sup>
	74.50 m <sup>2</sup>		64.41 m <sup>2</sup>



\* visine spavaćih soba i dnevnih prostora su 270cm,  
dok pomoćne prostorije (kupaonice, ostave, garderobe) imaju visinu od 250cm  
\*\* katalog stanova je informativnog karaktera i moguća su eventualna odstupanja



istočno pročelje



garaža -1

# 4.kat 1s+db