



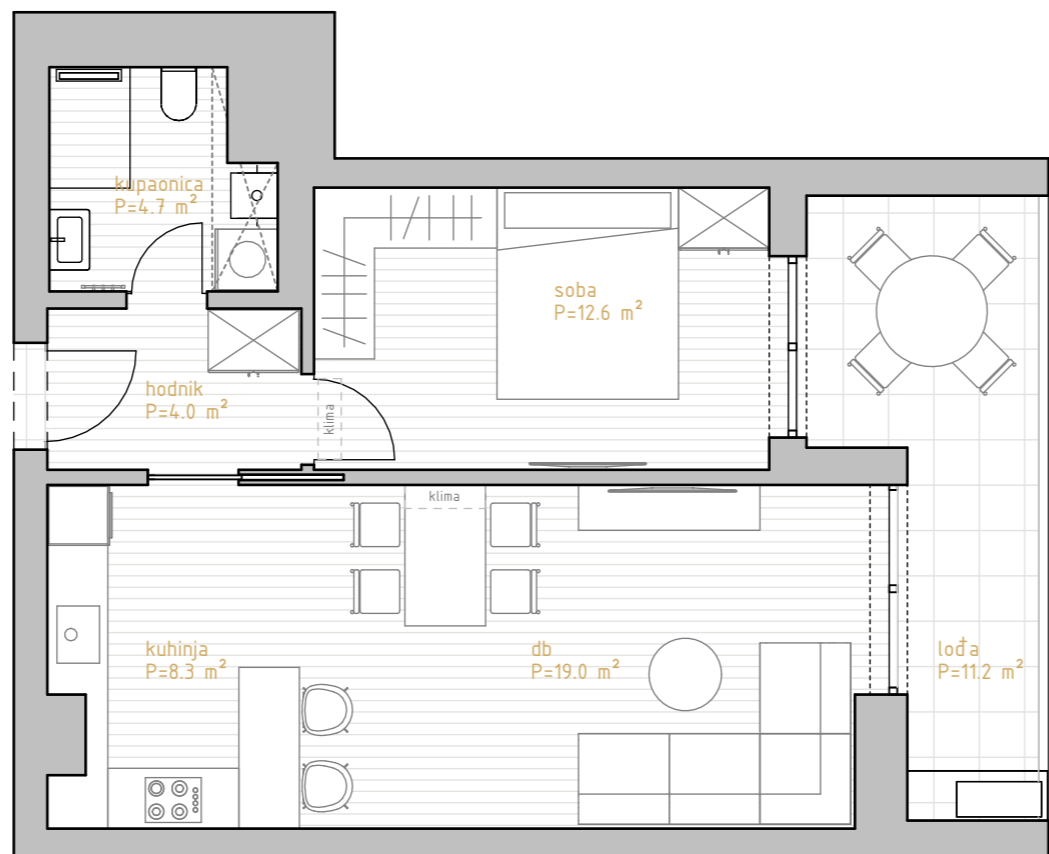
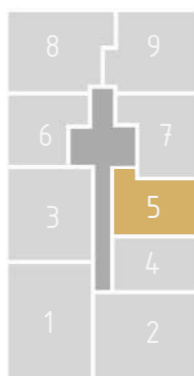
# PREMIUM LIVING

RIJEKA

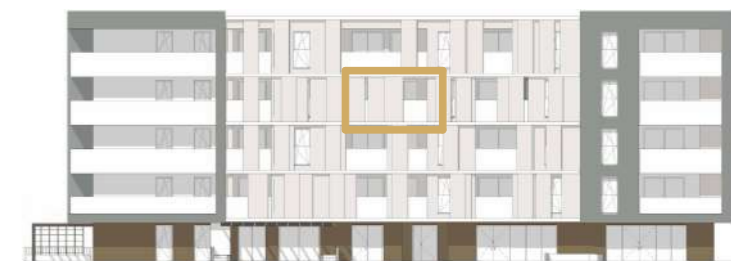
stan 5.3



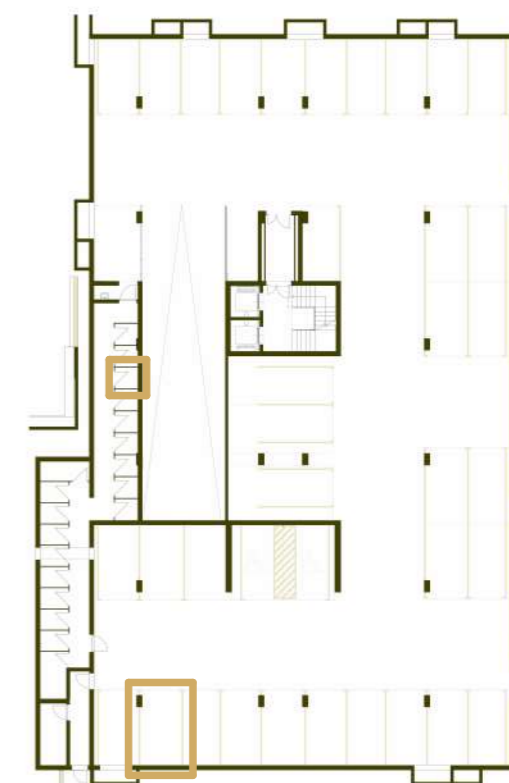
prostorija	korisna površina	koef	obračunska površina
hodnik	4.03 m <sup>2</sup>	1.00	4.03 m <sup>2</sup>
kupaonica	4.74 m <sup>2</sup>	1.00	4.74 m <sup>2</sup>
kuhinja	8.29 m <sup>2</sup>	1.00	8.29 m <sup>2</sup>
db	19.03 m <sup>2</sup>	1.00	19.03 m <sup>2</sup>
soba	12.64 m <sup>2</sup>	1.00	12.64 m <sup>2</sup>
	48.74 m <sup>2</sup>		48.74 m <sup>2</sup>
lođa	11.18 m <sup>2</sup>	0.75	8.39 m <sup>2</sup>
	11.18 m <sup>2</sup>		8.39 m <sup>2</sup>
SP3	2.14 m <sup>2</sup>	0.50	1.07 m <sup>2</sup>
	2.14 m <sup>2</sup>		1.07 m <sup>2</sup>
GM30	14.09 m <sup>2</sup>	0.50	7.05 m <sup>2</sup>
	14.09 m <sup>2</sup>		7.05 m <sup>2</sup>
	76.15 m <sup>2</sup>		65.24 m <sup>2</sup>



\* visine spavaćih soba i dnevnih prostora su 270cm,  
 dok pomoćne prostorije (kupaonice, ostave, garderobe) imaju visinu od 250cm  
 \*\* katalog stanova je informativnog karaktera i moguća su eventualna odstupanja



istočno pročelje



garaža -1

# 3.kat 1s+db