



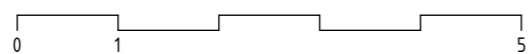
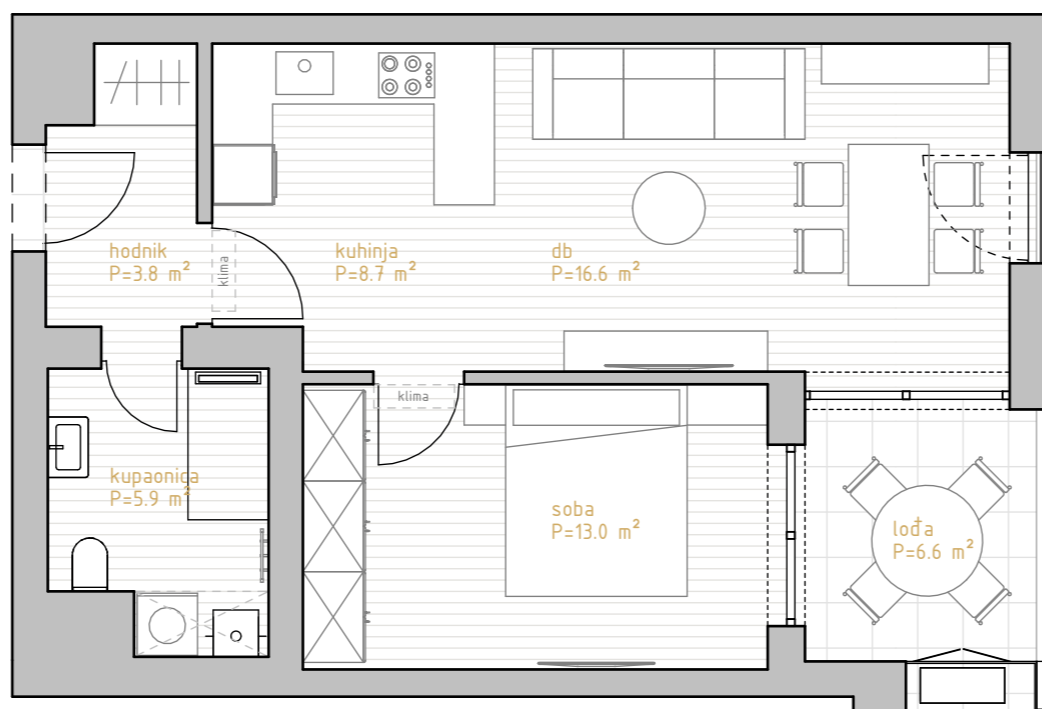
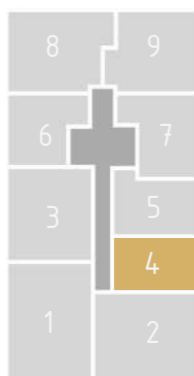
# PREMIUM LIVING

RIJEKA

stan 4.3



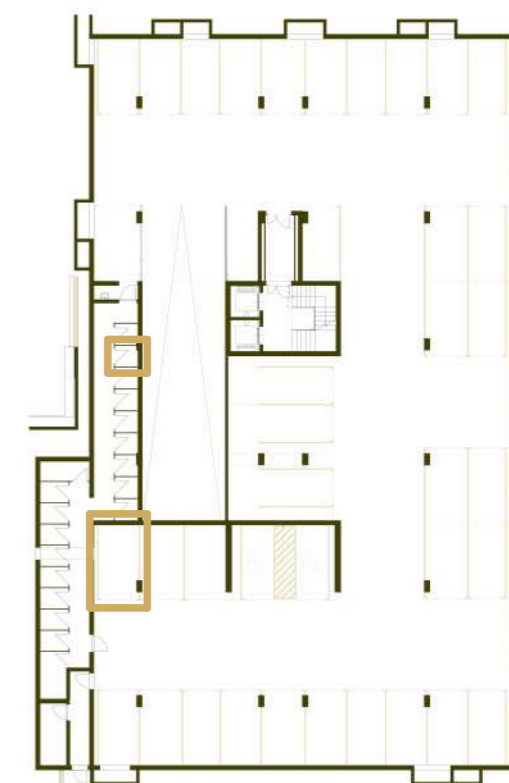
prostorija	korisna površina	koef	obračunska površina
hodnik	3.83 m <sup>2</sup>	1.00	3.83 m <sup>2</sup>
kupaonica	5.90 m <sup>2</sup>	1.00	5.90 m <sup>2</sup>
kuhinja	8.71 m <sup>2</sup>	1.00	8.71 m <sup>2</sup>
db	16.64 m <sup>2</sup>	1.00	16.64 m <sup>2</sup>
soba	13.05 m <sup>2</sup>	1.00	13.05 m <sup>2</sup>
	48.13 m <sup>2</sup>		48.13 m <sup>2</sup>
lođa	6.64 m <sup>2</sup>	0.75	4.98 m <sup>2</sup>
	6.64 m <sup>2</sup>		4.98 m <sup>2</sup>
SP2	2.11 m <sup>2</sup>	0.50	1.05 m <sup>2</sup>
	2.11 m <sup>2</sup>		1.05 m <sup>2</sup>
GM22	14.84 m <sup>2</sup>	0.50	7.42 m <sup>2</sup>
	14.84 m <sup>2</sup>		7.42 m <sup>2</sup>
	71.71 m <sup>2</sup>		61.58 m <sup>2</sup>



\* visine spavaćih soba i dnevnih prostora su 270cm,  
dok pomoćne prostorije (kupaonice, ostave, garderobe) imaju visinu od 250cm  
\*\* katalog stanova je informativnog karaktera i moguća su eventualna odstupanja



istočno pročelje



garaža -1

# 3.kat 1s+db