



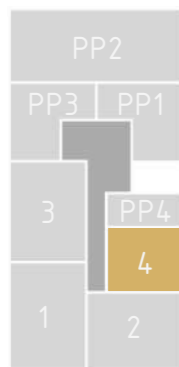
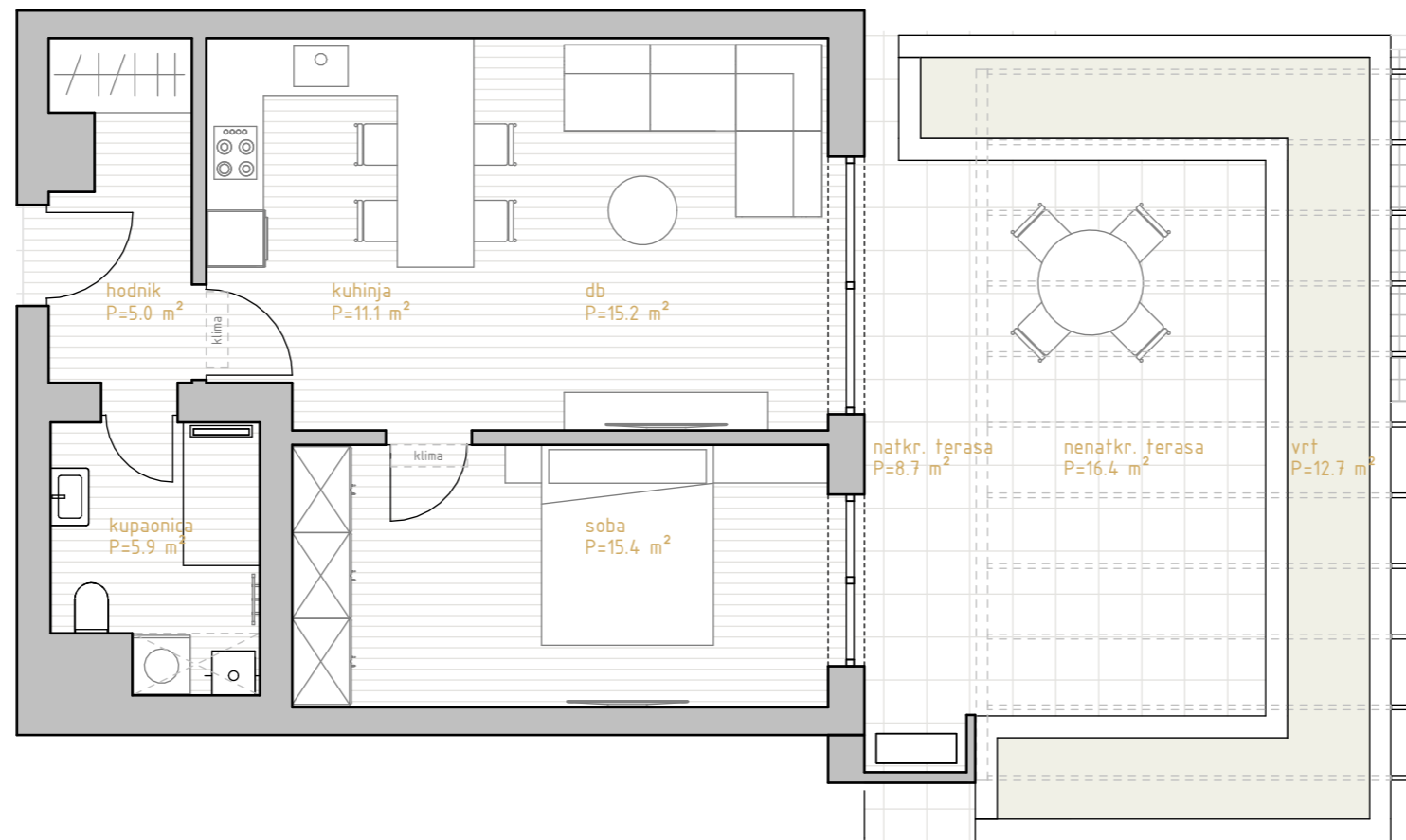
# PREMIUM LIVING

RIJEKA

stan 4.0



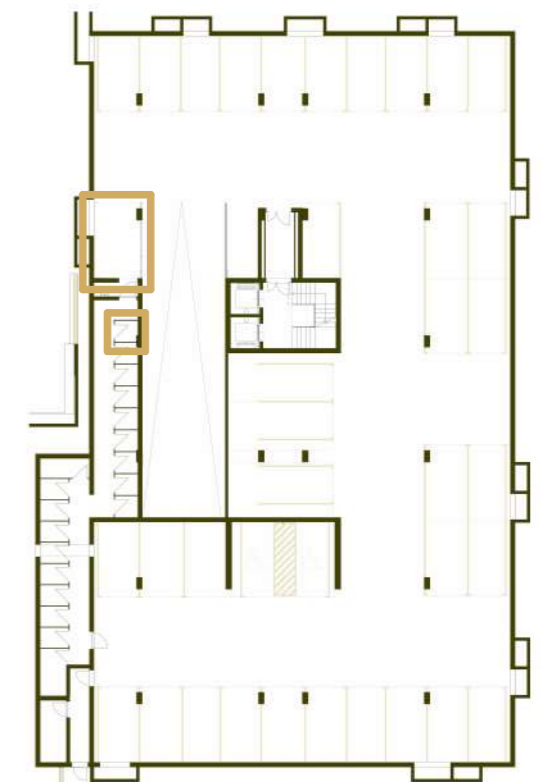
| prostorija      | korisna površina      | koef | obračunska površina  |
|-----------------|-----------------------|------|----------------------|
| hodnik          | 5.02 m <sup>2</sup>   | 1.00 | 5.02 m <sup>2</sup>  |
| kupaonica       | 5.90 m <sup>2</sup>   | 1.00 | 5.90 m <sup>2</sup>  |
| kuhinja         | 11.06 m <sup>2</sup>  | 1.00 | 11.06 m <sup>2</sup> |
| db              | 15.25 m <sup>2</sup>  | 1.00 | 15.25 m <sup>2</sup> |
| soba            | 15.43 m <sup>2</sup>  | 1.00 | 15.43 m <sup>2</sup> |
|                 | 52.65 m <sup>2</sup>  |      | 52.65 m <sup>2</sup> |
| natkr. terasa   | 8.75 m <sup>2</sup>   | 0.50 | 4.37 m <sup>2</sup>  |
| nenatkr. terasa | 16.35 m <sup>2</sup>  | 0.25 | 4.09 m <sup>2</sup>  |
| vrt             | 12.71 m <sup>2</sup>  | 0.10 | 1.27 m <sup>2</sup>  |
|                 | 37.81 m <sup>2</sup>  |      | 9.73 m <sup>2</sup>  |
| SP1             | 2.14 m <sup>2</sup>   | 0.50 | 1.07 m <sup>2</sup>  |
|                 | 2.14 m <sup>2</sup>   |      | 1.07 m <sup>2</sup>  |
| GM11            | 15.68 m <sup>2</sup>  | 0.50 | 7.84 m <sup>2</sup>  |
|                 | 15.68 m <sup>2</sup>  |      | 7.84 m <sup>2</sup>  |
|                 | 108.28 m <sup>2</sup> |      | 71.29 m <sup>2</sup> |



\* visine spavaćih soba i dnevnih prostora su 270cm,  
 dok pomoćne prostorije (kupaonice, ostave, garderobe) imaju visinu od 250cm  
 \*\* katalog stanova je informativnog karaktera i moguća su eventualna odstupanja



istočno pročelje



garaža -1

# priz. 1s+db