



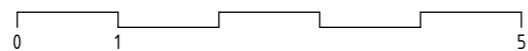
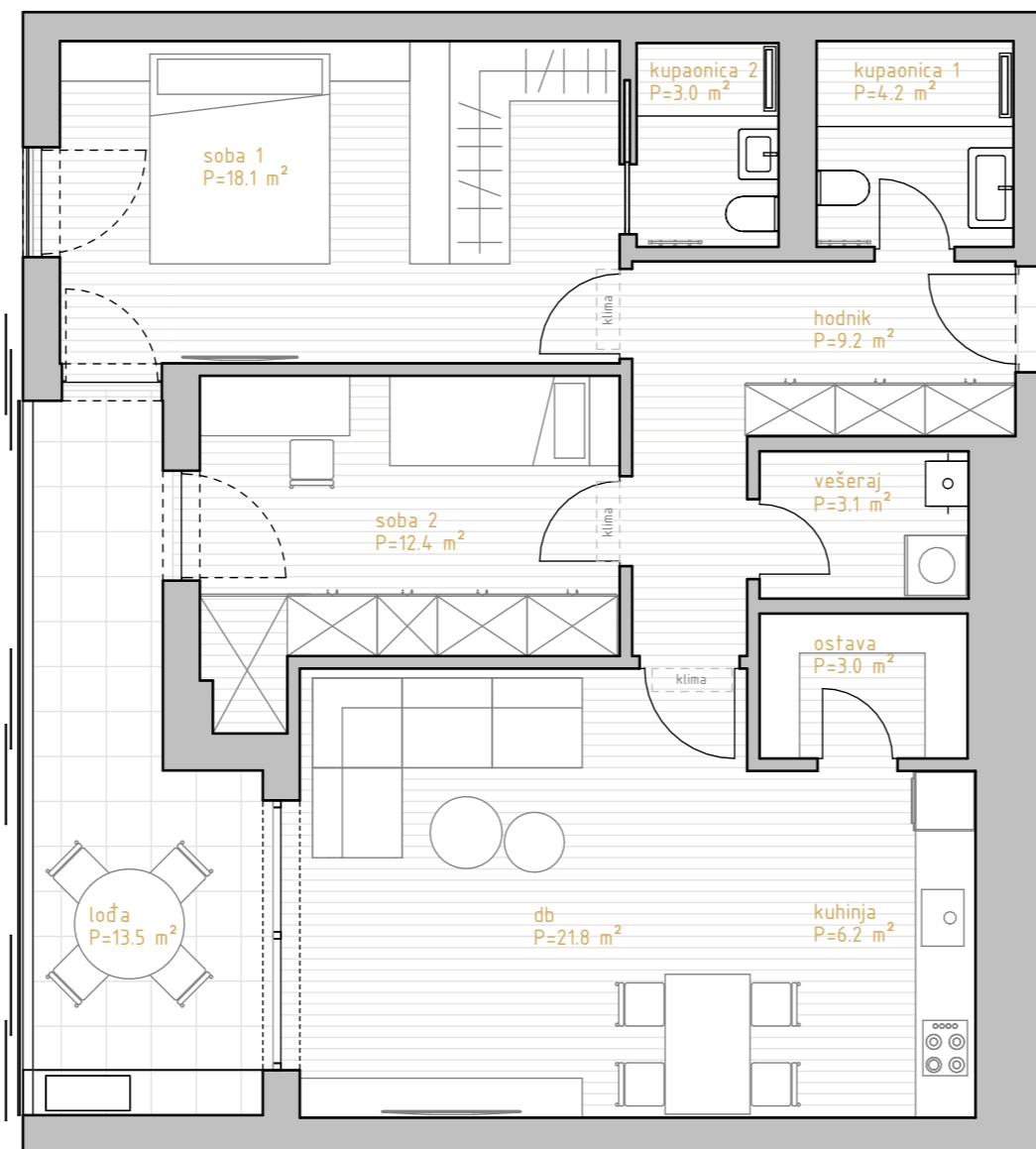
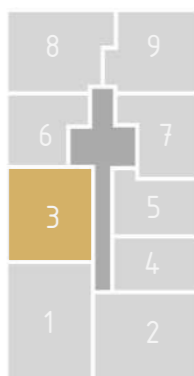
# PREMIUM LIVING

RIJEKA

stan 3.2



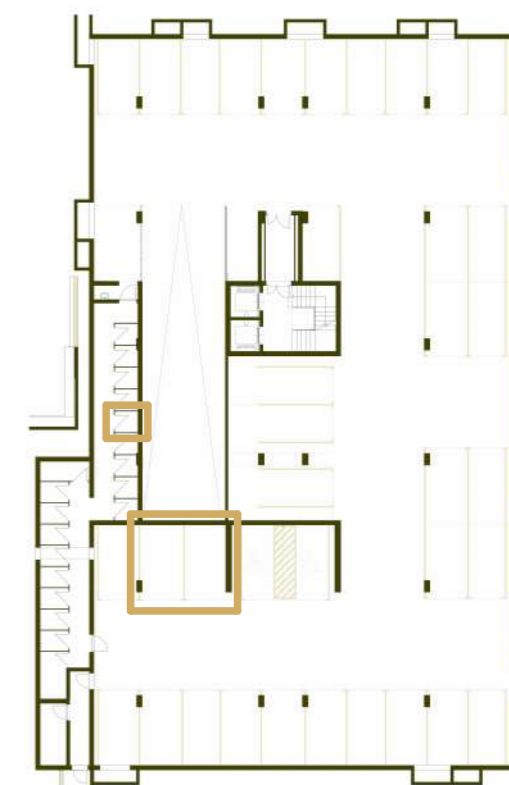
prostorija	korisna površina	koef	obračunska površina
hodnik	9.24 m <sup>2</sup>	1.00	9.24 m <sup>2</sup>
kupaonica 1	4.18 m <sup>2</sup>	1.00	4.18 m <sup>2</sup>
kupaonica 2	3.04 m <sup>2</sup>	1.00	3.04 m <sup>2</sup>
soba 1	18.07 m <sup>2</sup>	1.00	18.07 m <sup>2</sup>
vešeraj	3.08 m <sup>2</sup>	1.00	3.08 m <sup>2</sup>
soba 2	12.39 m <sup>2</sup>	1.00	12.39 m <sup>2</sup>
kuhinja	6.25 m <sup>2</sup>	1.00	6.25 m <sup>2</sup>
ostava	3.03 m <sup>2</sup>	1.00	3.03 m <sup>2</sup>
db	21.80 m <sup>2</sup>	1.00	21.80 m <sup>2</sup>
	81.07 m <sup>2</sup>		81.07 m <sup>2</sup>
lođa	13.46 m <sup>2</sup>	0.75	10.09 m <sup>2</sup>
	13.46 m <sup>2</sup>		10.09 m <sup>2</sup>
SP5	2.14 m <sup>2</sup>	0.50	1.07 m <sup>2</sup>
	2.14 m <sup>2</sup>		1.07 m <sup>2</sup>
GM23	14.59 m <sup>2</sup>	0.50	7.30 m <sup>2</sup>
GM24	13.97 m <sup>2</sup>	0.50	6.99 m <sup>2</sup>
	28.56 m <sup>2</sup>		14.28 m <sup>2</sup>
	125.23 m <sup>2</sup>		106.52 m <sup>2</sup>



\* visine spavaćih soba i dnevnih prostora su 270cm,  
dok pomoćne prostorije (kupaonice, ostave, garderobe) imaju visinu od 250cm  
\*\* katalog stanova je informativnog karaktera i moguća su eventualna odstupanja



zapadno pročelje



garaža -1

# 2.kat 2s+db